

General RECORD

249



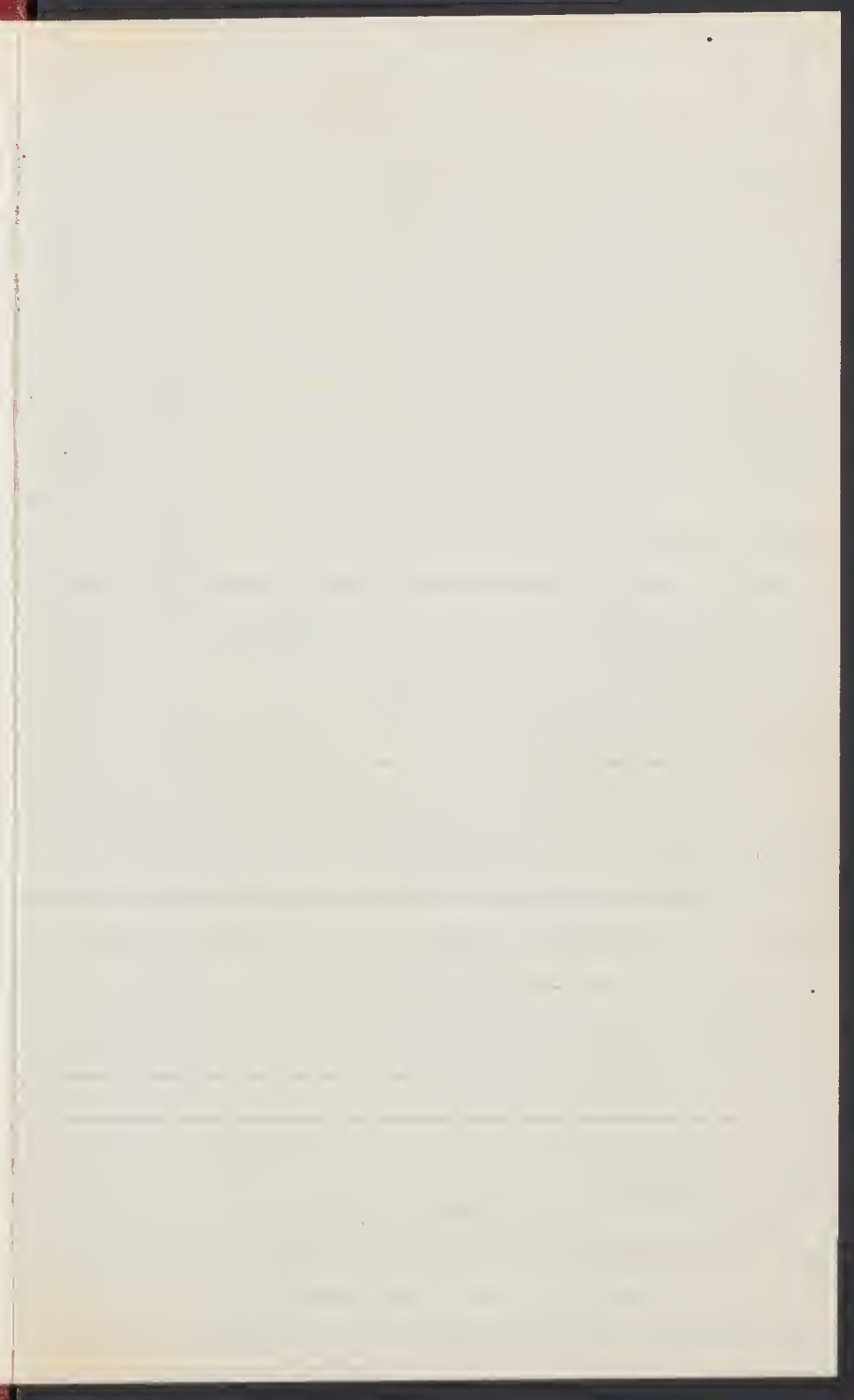
ACCOUNT BOOKS

144 PAGES • 7 $\frac{7}{8}$ IN. x 5 $\frac{1}{4}$ IN. (20 cm x 13.4 cm)

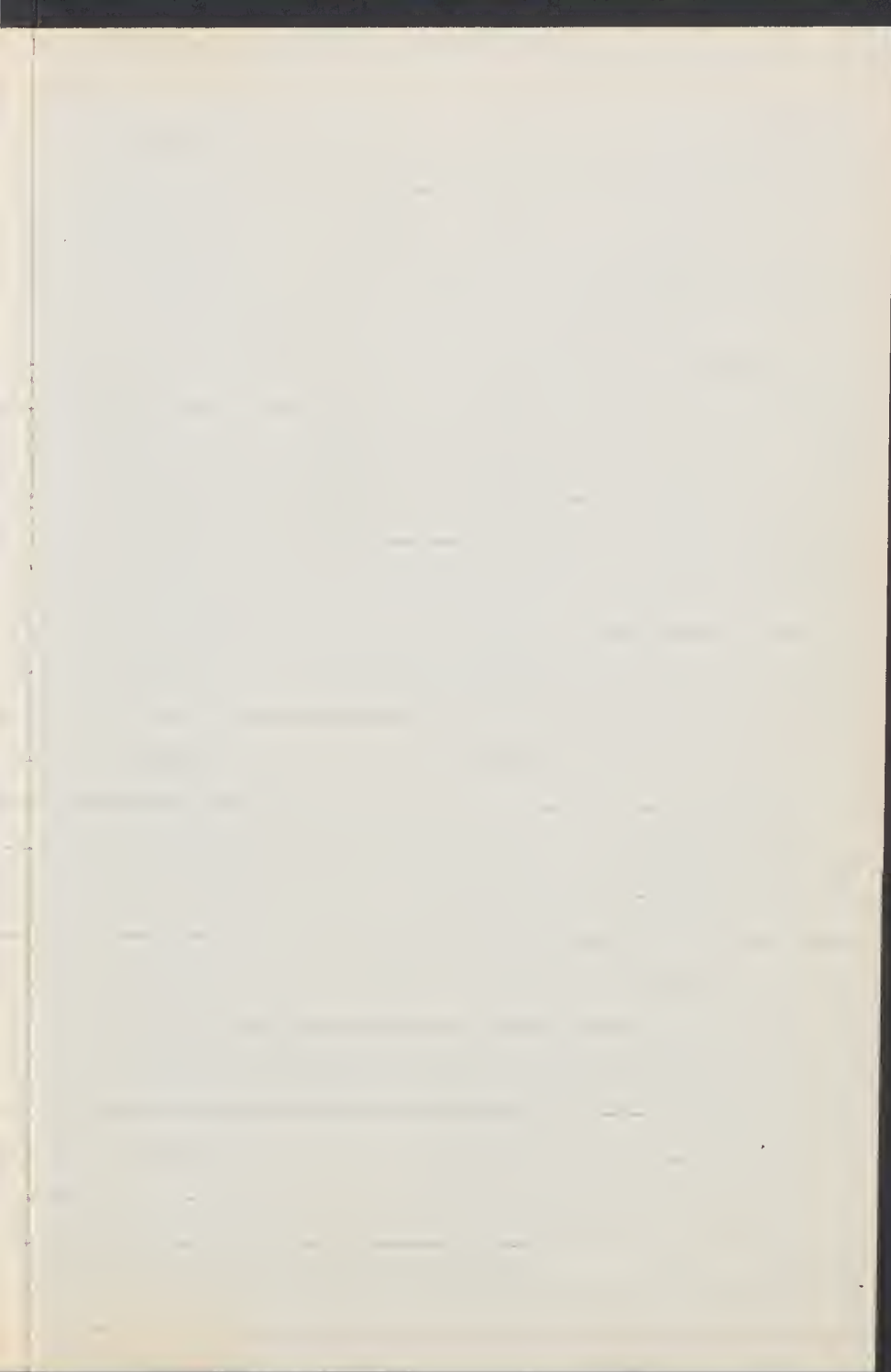
AVAILABLE AS:

No. 64-5400 (2044-J)	JOURNAL
No. 64-5402 (2044-SEL)	S.E. LEDGER
No. 64-5404 (2044-DEL)	D.E. LEDGER
No. 64-5406 (2044-C)	CASH
No. 64-5408 (2044-R)	RECORD
No. 64-5482 (2044-1)	RECORD-Ind. A-Z

VERNON McMILLAN, Inc., ELIZABETH, N.J. 07208



[The page contains extremely faint, illegible text, likely bleed-through from the reverse side of the document. The text is arranged in several paragraphs and is not readable.]



①

②

③

④

Ecuador 1980 ~~May~~ June 1

Imbabura Province.

Sunday.

1300 meters, dense montane - lower cloud forest vegetation, near Rio verde with Robert Bleiweiss

5017

Lichen, green, foliose, Lobaria like.

on log along trail in forest

①/1/1

1 → break into 3

det Lign '84
(Sw.)

5018 (Peltapteris) *Elaphoglossum peltatum* Urban

3 ferns arising by rhizome on log by trail

①/1/1

in dense moss (Peltapteris)

5018A → *Elysioglossum flabellatum* (Willd.) Mickel

5019. Peltapteris

det Lign '84

D/1

1 → 2 or 3 / growing with 5018 - intermingled but no intermediate - lemma lanceolate ciliate petiole present - looks to be a different species! of Peltapteris.

5020 *Equisetum Bogotense* HBK.

2/1/1

on sandy soil at edge of stream
petiole like stipe - branched at base.
det Lign '84

- 5021 *Hymenophyllum mexicanum* (L.) Sw. det. Lign. '84
①/1/1 Hymenophylloaceae, climbing on trunk of small tree at
edge of trail in forest.
-

June 2

Monday - area around hut of
René _____ in mature forest
1300 m. in vicinity of Rio verde
and Rios _____ x _____.

- 5022 *Dennstaedtia arborescens* (Willd.) Maxon
1 1 1 Fern, climbing on small tree to 10 feet
3 (epiphytic)?
① 1 var. bubble at base of petiole.

- 5023 *Lycopodium cernuum* L. Det. 3 Allgaard
2/1/1 *clavatum* group. epiphytic on horizontal
tree trunk fallen over river - climbing and
hanging over log - petiole branches more
less erect.
3 → (5) 1981

det Tign¹ '84

5024 *Grannitis subtilis* (Al.) Moort.

'84 ① 1

epiphyte on tree trunk, on moss on trunk
2 → (3)

5025

Indypteris fluminalis A.R. Sm. det Smith¹

① 1-1

fern, ~~growing~~ growing along stream over
rocks at edge of water, was very thin
always wet soil.

2 → (4) (sent to A.R. Smith for det.)

5026

① 1 1

colyx sticky, fls. 2x2, pink-lavender.
plant 3 ft. shrub. growing over rocks at base
of stream always wet conditions
fls. spured.

3 → (4)

5027

rd
'84

1 1 1

Selaginella ~~tricus~~ *anisotis* Sod. det Tign¹ '84

pendant on rocks along stream
large

2 → (3)

5028

① 1 1

Selaginella
pendant on rocks along stream.

2 → (4-5)

- 5029 Trichomanes capillacum L. det Tyn '84
 (2) 11 Hymenophyllaceae. dense mats on tree trunk
 in moist forest. very fine.
 2-(4)
- 5030 ~~Hymenophyllum~~ Grammitis Mathewsii (Mett.) Mont. det Tyn 1984
 1 1 1 A epiphytic clump by rhizome on small tree
 in dense montane forest.
 3
- 5030 A Trichomanes radicans Sw. det Tyn '84
- 5031 Grammitis leucosticta (J.Sm.) Mont.
 3 1 1 epiphyte ^(6 ft) on tree trunk in dense montane forest
 3 → (4) det Tyn '84
- 5031a Halimnophyllum
- 2 5032 A ~~Grammitis~~ Nephrolepis occidentalis Kze.
 1 epiphyte on tree trunk at 6000. Very large
 113 cm det Tyn '83
 (1) eorum amphostemum (Kze.)
 5032 - ~~Campyloneurum~~ det Tyn '84
- 5033 Adiantum Kalbreyeri C. Chr.
 1 1 moist level area along stream
 in dense montane forest
 3. det Tyn '83


5034

311

climbing epiphyte on small tree in montane forest. rhizome large ($2\frac{1}{2} \times 1\frac{1}{2}$) ^{cf. seeds} oval shaped leaves arching at pendant!
 rhizome 4-5 cm with scabrous rhizome flattened oval shaped.
 leaves to 124 cm long
 (90-104-124cf)

5035 *Danaea Moritziana* Presl.

111

fern, set type 1/5
 (3) leaves to 120 cm terrestrial fleshy
 base 

5036

large

~~epiphyte~~ Epiphyte

pictures

4 → 3 epiphyte star vine like
 shrub in larger tree. overhanging
 stream. flowers in early bloom.

(4) 11

Hummingbird visitors observed ~~in~~ at.

5037

2 11 (4) Ericaceae more purple, downy
pictures 150 ft of slope - this plant in late
bloom (later than 5036)

a pendant shrub like vine on side of
tree along overhanging river
Hummingbird visitors observed -

5038

pictures

1 1 1 small tree - to 15 feet at edge of
clearing flower fleshy purple to
orange fruits small
calyx adhearing w/ purple tips.
(3)

5039 *Lepanthes*

1 x small epiphyte on horizontal fallen branch
(1) above water. strong



Det. L. Garay

June 3, 1980 1300 meters
by camp, same as above.

5040 *Selaginella geniculata* (Presl.) Spring ^{at Tigris}
111 (3) terrestrial - 2 hrs of tree trunk
climbing up trunk. Some nodules found.
(all pieces in each sheet belong)
to each leaf

5041 *Sobrolina Fenzliana*

1 x orchid
epiphyte on horizontal fallen tree
odor of chocolate - verified by
Rob Blevins

Det L. Garay

moist - cloud forest

June 4, 1980, at same camp.

1460 meters upper montane forest.

5042 *Vittaria nemata* Fee det Lign '84

- ① 11 *Vittaria* - epiphyte on trunk of tree
 ^ pendant
 3-74

5043

111

fls white - calyx purple.
large herb - moist tree to ~~4~~ 4 1/2 meters
3

Holophebia Baker

5044

Asplenium Eutricale det Lign '84

② 11

fern, (*Asplenium*?) creeping along mossy bank
~~that~~ fallen from tree.

2 → (4)

1400 m

5045 *Asplenium rotaceum* (Willd.) Mett.

② 11

fern - sending out long leaves which root at
top and form new plants.

epiphytic on tree trunk det Lign '84
3-74

5046 *Selaginella anisotris* Sob. det Lign

① 11

epiphytic clumps on tree trunk from '84
garden - also epiphytic at low parts of
tree trunk.

Elaphoglossum sp. nov. aff. E. ovatum

5047 ~~Pellipteris~~ det. Lign '84

① 11 Creeping by long rhizome on mossy ground
fronds from canopy of forest

1350 m

5048

② 1 small yellow fls. small tree to 12 feet
in forest

3 ~~Visited by Urochloa baueri~~

5049

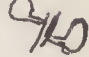
small tree w/ blue lacinate fls.
fls. 15 feet tall

5050

Selaginella Lycopodium dichaeoides Maxon

1 → (3)(2) Det. R. Øllgaard '81

pendant epiphyte at 15 feet in small
tree. leaves standing out from stem
on 4 distinct ranks.

Leaves parallel to stem 

1.5 meters

set type '84

- 5051 *Cyathia* *Fulva* (Mart. & Gal) Fée
|| | large herb to shrub - unbranched
terrestrial, ~~to~~ climbing up
tree trunks,
observed pollen visitor
Coeligena wilsoni (Brown Foca).
top up to 4 meters,
lower leaves early falling leaving
only upper leaves.
flower ~~red~~ yellow, calyx red.
(3) ~~*Phacotharis rymatophora*~~

- 5052
| | Gesneriaceae, large ~~herb to 2 1/2 meters~~
large herb - shrub - partly epiphytic
and pendant on tree.
flowers honey red.
(2)

1900 netens

5053

Ericaceae, (Vaccinaceae, small white flowers.
epiphytic on tree in crotch of
limbo

very violet tailed flycatcher
perch & have feeding observed.

3

Aglaeocercus coelestis

5054

111

ericaceae (+ pickbd)

3 → (4) Green Fronted Larkbill
observed visiting

Doryfera ludoviciana

along Rio verde

small tree to 2 1/2 meters.

5055

2 1

Gesner

(3) (same as 5054)

3 meters climbing fls yellow w/ dark spots
observed visitors white tailed Hillstar

Urochroa Bouguerii

Bouguerii

5056

1 1

Gesner.

streamside, 4 meters on fern
colony - at an edge of fern colony
white tailed Hillstar observed

(2) flower yellow, calyx red.

5057

③ 11

small tree, 10 ~~to~~ meters

streamside, white tailed Hillstar.

5-7(6) fls all yellow

5058

1 1

small tree to ~~2~~⁸ meters

stream side,

(green fronted Laniobill)

June 6 Friday,
vicinity of camp

going up a ridge running west from camp
that forms a divide between Rio Verde
and Rio Lita drainage. Spectacular forest.
collected from 1500 - 1770 meters.

as we walked up the ridge there were
few palms & one tree fern (Laysan tree!)
the forest became a little ^{more} open in that
there were not as many tall trees and more
smaller trees. Epiphytes were more prevalent
and species which were infrequent at 1700
were abundant at 1600/1500m.

1500 meters upper montane - lower cloud forest
vegetation

5059 *Diplazium castale* (Sw.) Presl.

111 terrestrial form, rhizome partially horizontal
the crest of growing point loosely anchored
in diff. ferns to 1.6 meters.
3 (det. Ligon '83)

5060

111 small shrub to 3 meters
3

1600 meters

5061

2/1

Large climbing shrub-like
"figer tense" - *Coccoloba* or *Acaetha*.
upper surface w/ small leaves.

~~the~~ lobes w/ 2 dark parallel
spots each.

(3) ~~Phaethoxys~~^{nis} *Syrmatophorus*
~~*Syrmatophorus*~~

5062

1 1 1

a climbing or epiphytic semi vine-shrub
yellow w/ red bristly flower looking
off early long red edges
underside of leaf purple w/ hair

(3) similar species lower down

1680 meters

5063

(1) 1

Hymenophyllum *interceptum* Kze
Hymenophylloideae *det. T. S. G.*

epiphytic on tree trunk, creeping by leaf
(2) ³*trigener*

5064 *Hymenophyllum sodiroi* Chrs. vel. aff.
③ 11 " (4) → (6) det. Ligon '84

5065

111 climbing vine, fruit fleshy - blue 0
with thick white latex.
Apoc.?, fls. purple & green

~~5066~~

~~Melastom., tree to 15 meters~~

~~fls. white~~

5066 *Salpichlaena volubilis* (Kunt.) Hook.

111 fern, climbing on tree trunks and branches

3

det. Ligon '85

1700 - 1740 meters

5067 *Selaginella anisotris* Sord. det. Ligon '84

③ 11 terrestrial, creeping over ~~humus~~ and bases of trees

5-(6)

- 5068 *Salpichlaena volubilis* (Kaulf.) Hook.
 111 fern. ~~to~~ climbing on tree branches
 3 det. Tryon '87
- 5069 *Vaccinium*
 211 epiphyte in cracks of trees.
 fls. deep ~~maroon~~ maroon red.
 3
- 5070
 111 ~~tree~~ large shrub to 3 meters
 flowers yellow - (a similar species w/
 smaller larger flowers occur lower down (1300))
 3
- 5071
 21 tree, melastom - 15 meters
 fls. very red ~~or~~ orange, anthers in blue ~~to~~
 soot?
 3
- 5072
 3 climbing epiphyte, yellow (bracts?)
 211 red fls. fall early.
 2 similar species in area.
 Generoseae

5073

1 (1) ericaceae
epiphyte on trees. flowers pendant
purple - seeds in a sticky gel.
bracts red.

1740 - 1770 meters

5074 ^h Scaphosepalum
Scaphosepalum

211 x orchid epiphytic on branches of trees
1 specimen seen w/ yellow flower not the
usually purple veined.

3 det L. Garay

5075 Hymenophyllum dependens Marton det Lignitz

411 Hymenophyllum, ~~per~~ hanging epiphyte on fallen
tree trunks, less to 1 meter

6

5076

11 x moss, fls upright, ~~colyx~~ ^{corolla} rays to base
green towards tip. ~~from~~ white
terrestrial or epiphytic on ~~base~~ tree trunks.

2

5077

2 1

climbing epiphyte on fallen tree trunk.

Genes.

fls. yellow, red tipped, calyx red.
3 P. sym y Brown Inca

5078 Erythroxes

1 1 + terrestrial orchid, like Gardneri.

fls. white

2 Det. L. Garay

5079

1

creeping vine on tree. calyx orange.

~~fls.~~ corolla orange & yellow

~~fls.~~ hanging and curving upright.
1 Trff

5080

1 1 1

bamboo. creeping over bracken
abundant.

June 7.

right by Camp. 1300 m
epiphytes in canopy of tree. 25 m

Funiforme Spring.

5081 *Lycopodium*
pendant epiphyte
Octr. B. Øllgaard
1981

5082 *Oleander pilosa* Hook
5 11 climbing on tree
det Liza '83

5083 *Hymenophyllum interruptum* Kze. det Liza '84
3 11 long epiphyte on moss branches

5083 A *Trichomanes sulcatum* Achomatos

5084 *Hymenophyllum myriocarpum* Hook.
2 11 epiphyte on moss branches det Liza '84

5085 *Grammitis trichomanoides* (Sw.) Ching
① 11 epiphyte on moss branches det Liza '84

5086

(2) 11 moss Rhytidiaceae, epiphyte
2 → (6)

5087.

? Lichen 1 → (3)

1260 meters

5088 Heliconia

(13) 00 fls yellow, bracts red
2. obscure visited by
white tipped scotobill.
fl spike 140 cm long

1560 meters

5089

(2) ~~Bromeliad~~ epiphyte to 120 cm from base
leaves 1 m across > 1 m long
fls white tubular, epiphyte 8 m up
Brown Inca in trees

1560 m

5090

1 Bromeliad epiphyte

5091

1 Bromeliad " "

~~6/17/80~~

July 13,

Inbaburra Prov.

with Robert Bleiweis

2600 meters

Hacienda ^{El} Hospital ~~owned by~~ ^{owned by} N. of Cotacachi

ca 13
Km N. of
Cotacachi

Salis. Just above Casa along trail

2 1 mile.

Steep w. facing slope, ^{grows dry} *Andropogon stipa*, *Aristida* etc.

5092

3 11

erect, fruit purple black - seeds in cell
bracts red, fls. red. w. white tips
dry grassed hillside, shrub to 1 meter.

4

5093

2 11

erect, fruit black, seeds in cell
fls. pink-white, shrub to 50 cm

2-(3)

5094

1 11

Cheilanthes bonariensis (Willd.) Proctor

Chicilloth, - in crack of rock det Lign '83

3

5095

(2) 11

Elaphoglossum stenophyllum (Sod.)

Piel's

3-(5)

det Lign '84

5096 Elyophorum Jamesonii (Hook & Grev.) Moore
2 11 fertile leaves folded and erect, det. Tye 14
other leaves rosette like, fan shape of
vertical rock
2-(4)

5097

① 11 shrub to 2 ft. fls. white
3-(5)

5098 *Altenstermia fimbriata* HBK

1 1 1 x orchid terrestrial fls. green
3

Det. L. Garay

5099 *Asplenium praemorsum* Sw det Tye '82

1 on rock / vertical rock
1-(3)

5900

1 1 1 Lichen, yellow, on bark of shrubs (loosely)

5901 *Passiflora*

1 1 1 fls orange red.

All honeybird in area had yellow-orange pollen
on back of head - most likely bee-eater plant.

Met Colibri & coruscans

5902

1 *Amegilla* fls orange, anthers yellow
(1) *Metallura* trianthina

5103

D 11 fl. yellow, w/ very small opening.
4-nerve, not open when collected

==

July 16

Vdeca Cotacachi (w. of. 3200 meters)
Nw slope of Alturas De Cayachupa
grazed, burned paramo
bunch grasses

5104

(2) 11 Liliaceae. gray anther enclosed under edge
of perianth; sepals orange petals yellow w dark
spots, stamens 6.
2-4

5105 *Pterichis*

(1) 11 + orchid - Lit. spiranthus
Lorata band lower, root nearly 2 telomerous
sepals green, petals brown-green
upper pet. lighter w/ dark stripes
edges of petals revolute
1-(4)

- 5106 *Vaccinium*
 ① 11 shrub to 3' tall, sent to fire,
 growing back vigorously from base
 the pink in bud, white at maturity
 fruit blue - delicious when ripe.
 abundant.
 3-7(4)
- 5107 *Gomphidius*?
 ② 11 orchid - Like *Godyera*.
 amongst grasses, spathe like *Bryonia*.
 21-2(3)
 Det L. Garay
- 5108 *Barbura*
 ② 11 young leaves purple; fls. - greenish yellow
 4-7(5)
- 5109 *Lycopodium* *Capellae* (Herter) Morton
 ② 11 on slope Det B. Øllgaard.
 5- (9)
- 5100 *Lycopodium* *thyoides* H. & B. ex Willd.
 ② 11 *Complanatum*
 creeping Det. B. Øllgaard 181
 3-5 *Complanatum* det Lager 182
- 5111 *Lycopodium* *clavatum* var. *contiguum* (Kt.)
 ③ 11 creeping ined.
 2-8

5112 Jamesonia

① 11 6-(12) moist grass

5113

1 11 Loranthaceae

fruit orange glaucous.

fls orange-yellow - at opening

1-2(3)

5114

Sphagnum

② 11 low wet area of park

5115

Sphagnum

"

5116

Cladonia

"

5117

① 11

Lichen, (parietaria)

epiphytic on shrubs at edge of park

5118 Oropogon

①

"

5119 Oropogon

①

"

5120 Oropogon

①

"

5121

①

non, epiphytic on the d edge of forest along
pass

6/17/80

by camp, Lorentz 3200m

5122

①

Xlichon epiphytic on ^{mossy} trunk & branches

5123

1

X"

5124

①

"

5125

①

"

5126

1

"

5127

Epidendrum

2 11

orchid in clump, epiphytic on horizontal
trunk at 3 feet of ground.

bracts to 1.3 netem, fls green yellow

4

fragrant ^{single} ~~triple~~ to *Cynopodia* coloration

5128

Hymenophyllum *Ferax* v. d. Bosch.

2 11

fern, epiphytic on tree trunk

pendant

set sign 51

4

5129

3 11

melastoma, small sprawling terrestrial shrub.

4.

5130

2 11

fern

pendant on tree trunk

5131

2 11

fls dirty blue shrub to 15 feet

4 → 5

ERBOCNEMIS LUCIANI

5132 Polypodium

2 // fern, epiphytic on tree trunk

6/18/80

Goat to NE of camp, much water
than one by camp - more epiphytic denser
now. At 3300 meters we left
turned parao and entered goat at
3200 we crossed a ridge that became an
elfin goat - very nice - the patchy
became forest again - descended to 3150m.

5133

3 // bristly ~~at~~ dense at edge of parao
bristly shrub to 1 meter

5134 Lycopodium rosenstockianum Herter

3 // ~~arise from moss and grass at edge of parao.~~
pendant from moss bank. Det. B. Øllgaard
'81

4

5135 Lycopodium subulatum Desu. ex Poiret

5 // pendant from moss ~~with~~ ~~by~~ bank
Ce Det. B. Øllgaard
'81

- 5136 Lycopodium *thyoides* H. & B. ex Willd.
 (2) 11 ~~pendent from rocky bank~~ Det. B. Billgard
 among moss & ferns & shrubs at edge of park. '81
 (L. *Cyrtocarpus* *tysonii* + 3)
- 5137 Lycopodium *rosenstockianum* Herter
 (1) 11 epiphyte on trees at 8 meters ex Det
 present to 1 1/2 meters B. Billgard.

- 5138 Epidendrum
 3 11 orchid, no fragrance epiphyte in tree
 at 2 meters, branching to 1 1/2 meters
 Det. L. Garay

- 5139 Fernandezia
 (3) 11 orchid, red, creeping & branching on
 tree trunk in elfin forest
 Det. L. Garay

- 5140
 11 orchid, small yellow-green, creeping & branching
 on tree trunk in elfin forest.

5141

(2) 11

erect, fls. red, loosely & clinging
 to over shrubs,

E. Luciani

R.B. 3/21
 H. at

- Thelypteris* aff. *corazonensis* Sod. } det
 but probably a new species } A.K. Smith.
- 5142A) rest to A.R. Smith list.
- 5142) *Thelypteris* cf. *corazonensis* Sod. }
 but slightly different - few callosities }
- 211 *Oryza*, terrestrial on land.
 (var. bundle 2)
 3 det Tjorn '84
- 5143 *Hymenophyllum* *Sodiroi* C. Chr. var. aff.
- 111 *Hymenophyllum*, branching in 3 dimensions →
 4, becoming bushy like.
 epiphytic on tree trunk.
- 5144 *Hymenophyllum* subg. *Leptocionium*
- 111 *Hymenophyllum*, epiphytic
 det Tjorn '84
- 5145 *Elaphoglossum* *Sodiroi* (Baker) Christ?
 111 epiphytic at very base of tree trunk
 3
- 5146 *Elaphoglossum* ?
 111 epiphytic on base of trees.
- 5147 *Coccineorchis* *cernua* (Andr.) Garay
 211 orchid Terrestrial on land.
 the name
 Det 2. Garay

222

5148

111 shrub fr blue, shrub to 3 meters
along stream in forest

4

5149

Thelypteris scolarii (Christ) ~~Alston~~

211

fern terrestrial

Alston

4

det Lign '84

5150

Thelypteris torucinata (L.) Proctor ^{det.} ~~Wright~~ (84)

111

fern. Terrestrial - lower to 4 meters
arching and supported on vegetation

3

8

6/20/80, by camp (local)

5151

211

Tree fern, 4 meters high, lower to
1.6 meters, 2 small forms at base of
stems

5152

Pernettya prostrata (Cav.) DC ^{det.} _{J. Luter}

111

erect black shrub in burned paramo

R.B. Has 3/21

fl. white, fruit black $\hat{=}$ Lantchen

seeds dry? to 1.5 meters tall

5153

211

herb fr blue, burned paramo
 $\hat{=}$ shrub to .8 meters

5154 Castilleja
② 11 bracts red. paras

5155
② 11 yellow shrub; Rosaceae?
burred paras, shrub to 1.5 meters

5156
② 11 Composite, paras - shrub to 1.5 meters
fls yellow.

6/21/80

West - N of Camp, wetter forest
3200 meters.

5157

111 climbing vine 2-6 meters
open? visited by B. P. winged Star Kestrel
2 (3) COELIGENA LUTITIAE
L. Bolocane

5158

111 climbing vine 2-6 meters.
open?
3-(4) Libellulaceae

5159

PTEROPHANES CYANOPTERUS

|||

Loranth. reb fr. LAFRESNÈRE LAPRASNEVEII

5160

Calceolaria

|||

Metallura tyrianthina

~~5161~~

5161

Fuchsia

|||

fls red, large leaf to 2m tall

5162

Macleania rupestris (HBK) A.C. Smith

② |||

erect, red, climbing to 7m tall

R.B.

Coccoloba lutea

Hae

Det Jama Loteyn

5163

211 ad spec. *amblyvina*

Ldebarus

5164

Blechnum

Coe l. bar
Bochtienii

Rosenst.

211

toxicum!

det Llyn '83

5165

111

~~Polypterum~~ Grammitis *semihirsuta* (Kl.)
Mort. det Llyn '84

5166

111

~~Polypodium~~ Eriophorum *flexuosus* (HBK)
Copel
det Llyn '83

5167

D11

melastoma root colored beneath

~~Ranunculus~~ Shrub.

Mett. tyr

5168

~~actinone~~, fls yellow, fruit sticky
in ~~amblyv.~~

? where

5168
① 1

R. B.
Hos.

melastom, flat topped
bruta flesh umbels

clusters ^{for} ~~purple~~

3. Ramphomicon

microphy ^{with long}

microhynchum

5169

① 11

conspicuous, shrub

Ramphomicon ——— "

5170

① 11

conspicuous, with bracts purple

Ramphomicon ——— "

5171

111

Lichen

6/23/80, while travelling out
of Pinar to El Hospital.

Laguna de Pinar, 3150 meters
(Las Donas)

ca 30 km NW of Ciénfuegos

5172 Hymenophyllum polyanthos Sw. det Lign '84

311 Polypodium, exserted on arching stalks.
along brushy *Lobelia*

5173 Polypodium monorum Hook.

311

" " "
Polypodium det Lign '84

phyticifolium

5174 Lycopodium phyticifolium Desv.
ex Poirét

311

Det R. Sillgard

L. subulatum det Lign '83 '81

3400 meters, moist & humid fern

5175 *Vicia*

111

between para y Tana Uro de Piñan
at Cotacachi.

3800 meters

grass & burnt pasture

5176 Senecio

111

3500 meters. - grass & burnt pasture

5177 Lupinus

(2) 11

shrub to 1 meter

5178

Chiquiraga
~~Chiquiraga~~

(4) 11

shrub to 1.7 meters.

the orange

Aqueleactis cupripennis

5179 Gentiana

(4) 11

fr purple.

3300 meters

5180

3 11 large shrub - herb to 3 meters
fls purple - yellow,
newly lobed, large stem and a thickened

5181

11 1 arborescent upright shrub. on exposed
bank of trail fls. yellow.

~~320~~

5182 *Polystichum Sodiroi* Christ

3 11 fern, terrestrial on dry side of trail bank.
det Tryon '88

5183. *Thelypteris Rosenstockii* (C. Chr.) Tryon

11 1 " det Tryon '1984

3200 meters

ferns

5184 *Labellia*.

2 11

2400 meters.

5185 *Lepochinia*

3 " weedy shrub to 1.5 meters long
trunk - fls. white, edges becoming purple.

8/11/80

with B. Algard and Susan Roth.

Radio station road by Papallacta

~~4200~~ 4200 meters small ~~like~~ Logans
chuckhole like

5186 *Isoetes*

submerged and emergent in small center of lake

4100 meters small Logans

5187 *Isoetes*

submerged in small lake.

4050 meters

5188 *Isoetes*

submerged in large shallow Logans

And Isoetes given to Jim Hickey fresh for
4600 m. culture

5189 Isoetes tripartita
in moist soil along small running stream.

Aug. 21 Prov. ^{OK} Carchi

3350 m. on road to El Cerrito
15 km before town. edge of
Isoplotis parana

5190 *Ullucus*
culti. in field.

3

5191 *Sphagnum*
low wet bog

5192 *Sphagnum*
low wet bog.

7. km before El Carmelo
3200 m. steep road at

5193 *Lycopodium* cf. *rosenstockianum* Herter
terrestrial, pendant on steep road at

Det B. Øllgaard
(cf. *L. Mexiae* et *tyri*'83)

5194. *Lycopodium* *tenuis* H. & B. ex Willd.
terrestrial, pendant on steep road at,

Det B. Øllgaard '81
(fontinaloides Springs et *tyri*'83)

Sept



1980 Sept. 8 Minnesota.

Ottertail County
ottertail prairie, prairie,
small ridge

5195 *Gentiana*

5196 *Spiranthes*

=
Prairie on Ottertail - Grant Co. Line
just to E of Powerline (Ott. Co.)

5197 *Spiranthes*

Douglas Co.

?-wisters prairie

5198 *Aster oblongifolius*
dry prairie hillside

Douglas Co.
Kelley Hills or Elmers Hills
East of 2. Christina.
Dry tacky pastured prairie.

5199 *Orobanche ludoviciana*
sandy bank

5200 *Helianthemum*
growing only with 5201 !!

5201 *Lechea*

5202 *Aster oblongifolius*

5203 *Aster azureus*

1981, August 17
Douglas Co., Minnesota
T128N, R39W N $\frac{1}{2}$ Sec 31

5204 *Linum usitatissimum* L.
Label \checkmark cultivated in field.
Typed at Econ

August 18
T127N, R38W S $\frac{1}{2}$ SW $\frac{1}{4}$ Sec 16.

5205 *Cannabis sativa* L.
Econ \checkmark disturbed soil in pasture along drainage
ditch.

T127N R39W SW $\frac{1}{4}$ SE $\frac{1}{4}$ Sec. 23

5206 *Fagopyrum*^{um}~~um~~ *esulentum* Moench.
Econ \checkmark cultivated in field. Buckwheat

5207 *Medicago sativa* L.
Econ \checkmark planted ~~on road ditch~~ ^{with forage}
Alfalfa

SE $\frac{1}{4}$ Sec 20 (our farm)

5208 *Tetragonia expansa* Murr.
Econ \checkmark cultivated in garden, seed from Rupees
New Zealand spinach

5209 *Borago officinalis* L.

Econ ✓ " "

5210 *Citrullus vulgaris* Schrad

Econ ✓ "watermelon"

5211 *Cucumis melo* L.

Econ ✓ "Honeydew"

5212 *Mentha spicata* L. "spearmint"

Econ ✓ " "

5213 *Glycine max* Merr.

Econ ✓ cultivated in field

August 19, 1981 Douglas Co., Minn.
Z-Sisters Preserve (TWC)

5214 *Cascota*

grassy or herb & brush in wet thickets
near spring.

5215 *Sagittaria*

wet thickets near spring

5216 Verbena
edge of woods along ~~stands~~ old road grade

5217
prairie wet meadow near spring

5218 Epilobium
"

5219 Epilobium
"

5220 Pilea
"

5221 Mimulus glabratus HBK
in A.C. of near spring

5222 Amphicarpa
over brush & herbs in low wet woods

5223 Gerardia aspera
dry prairie above prairie pt

①
SE¹/₄ SE¹/₄ Sec 8 T128N R39W

5224 *Trifolium pratense* L. Red Clover
Elev ✓ cultivated in field for hay and for seed

August 20, 1981 Douglas Co

by Elburn Roth's

NW¹/₄ SE¹/₄ Sec 1 T127N R. 38W

5225 *Humulus*
on roadside (dry)

SE¹/₄ Sec 20 T127N R39W
our farm

5226 *Polygonum convolvulus*
creeping weed in garden

Aug 31 Grant Co Minn,
SE corner of Lake just E of Herman on Hwy 27
between Road & lake.

5227 *Desmanthus*
sandy soil between road & lake

August 25, Douglas Co.
SE 1/4 Sec 9 T130N, R36W
Spruce Center Wildlife Management Area
Low wet woods. Abies, Larix, Picea, Alnus

5228 Polygonum

5229 Cleome

5230 Impatiens

yellow flowers no spots - only plant seen
w/ yell. fls. - many with orange

5231 Bidens

5232 Carex *claytonii*

4

5232a Aster

5233

grass

5234 Vaccinium

5235 Malaxis

5236 Habenaria

"

5237 Lemna

floating in pool of 160

5238 Endogone pisiformis Link ex Fries

✓ Fungi - growing at top of capitulum
at Farlow / Sphagnum glaucescens
very yellow only 2 seen

Det. R. Pfister

5239 Paonessia

wet meadow at edge of woods.

5240 Carpinus

edge of swamp woods

large shrub 15 feet

T130 N R. 36 W

NE 1/4 NE 1/4 Sec. 6.

wet sedge meadow

5241 Solidago

5242 Epilobium

5243 Aster

5244 Scutellaria

5245 Spiraea
small bush (4 feet)

5246 Heracium
open oak woods along road
sandy soil

T130N R37W

N¹/₂ NE¹/₄ Sec 2, South side of road
at bend

5247 Sagittaria
edge of boggy road sandy soil

5248 Polygonum scandens
dwarf bush.

N side of road.

5249 Cornus rugosa
shrub to 10 feet, moist woods fruit white -
light blue

5250 Pilea
moist soil in back deciduous woods

5251 Urtica
moist soil in wet deciduous woods
3 feet high

NE 1/4 NE 1/4 Sec 34 T128N R38W

5252 Sorghum vulgare Pers.
✓ cultivated in a ~~seed~~ seed planting
Econ with see for use as silage

~~Bot~~ Cambridge Mass
Sept. 25. 1981

Harvard Herbaria Experimental
Garden

5253 Boussingaultia basellardos
10 cult from tuber obtained from Park Seed
Co.

Climby vine, racemes pendant.
dense tuft, lower stem thickening
producing large tuber underground
tuber stringy with a bitter taste.

Stems reflexed in bud, verticils of many
small corolla opposite for the small part of
nodes. Flowers fragrant.
succulent

5254 *Basella alba*

string bean, fruits black-purple
succulent seeds from Burpee Seed Co.
sold as B. Alba Golden Spinach.

5255 *Basella alba*

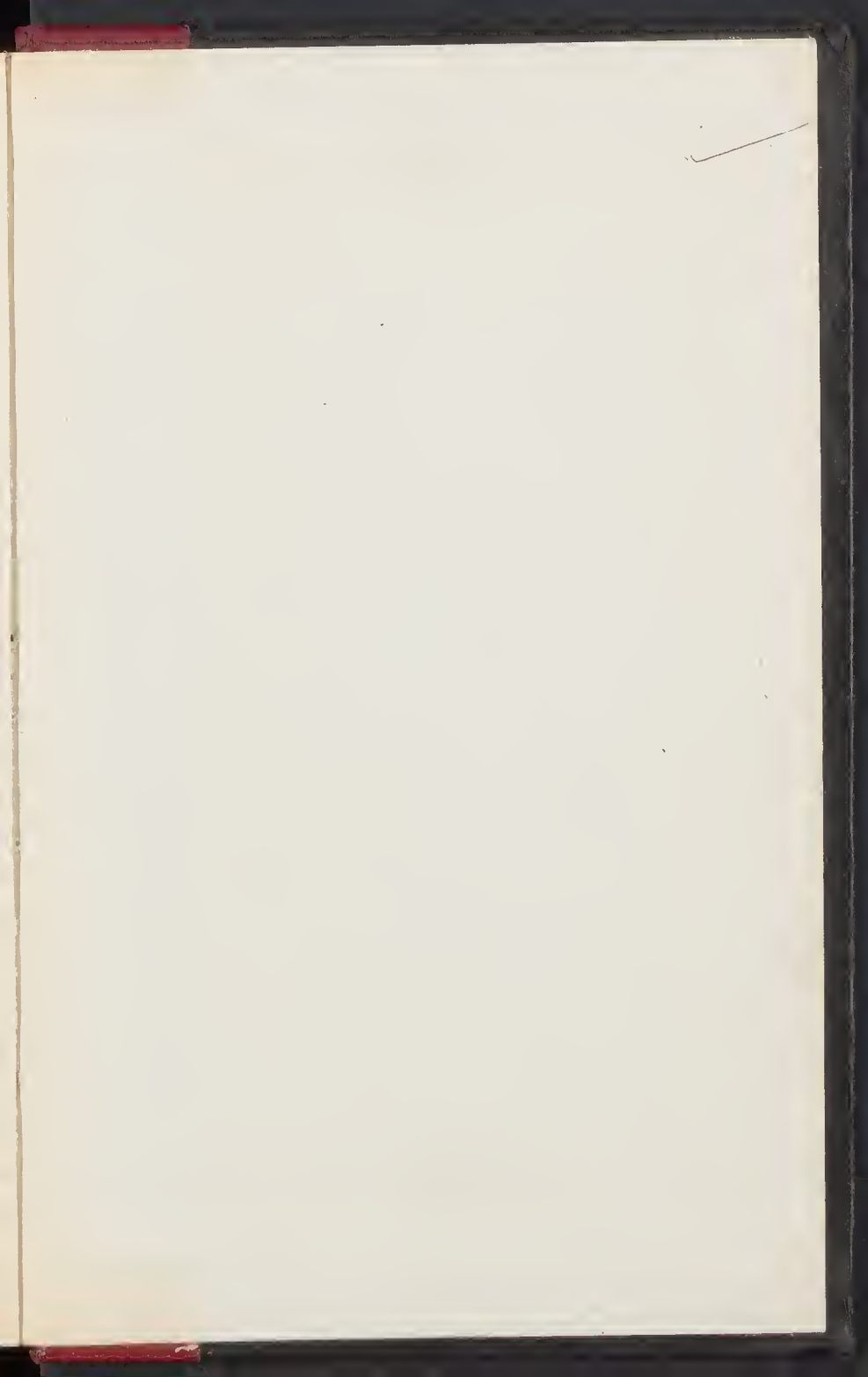
same as above but red stems glaucous

Ulucus by Henry Diaz

Prov. Areash

Huavás - multicolor

Town of Puro = 3. large ones



Collection #15